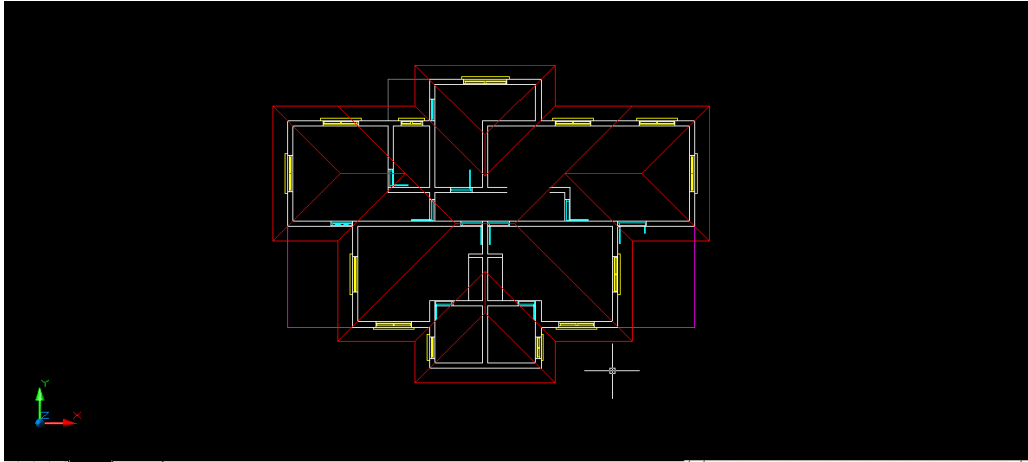
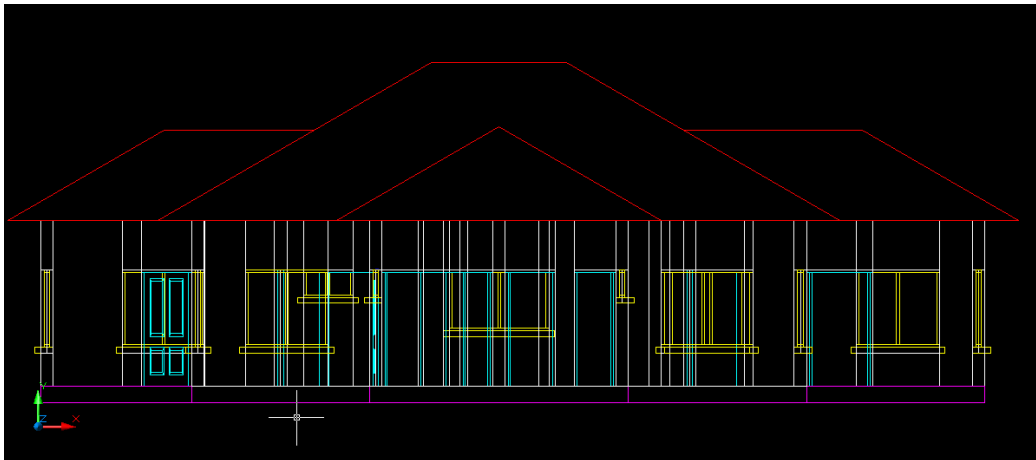


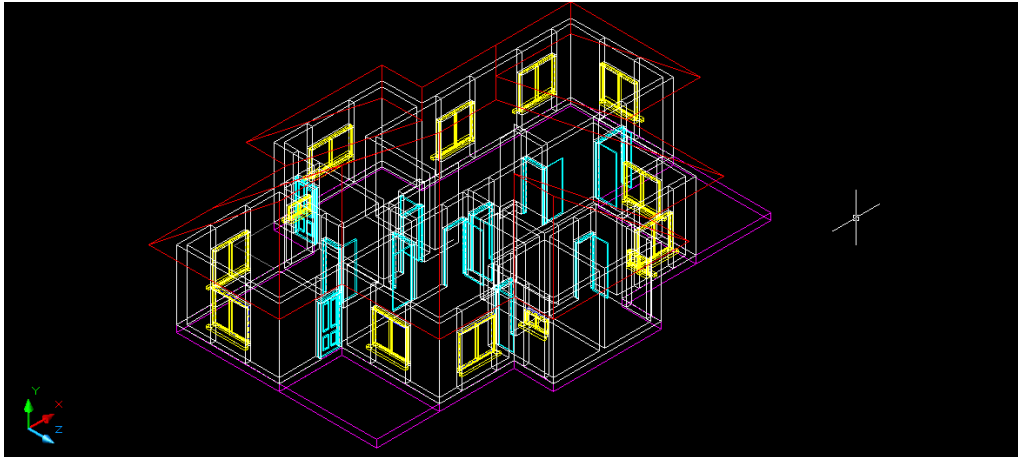
This are easily changed to solid model using a basic shading techniques to give an illusion of depth to an object. All these are also considered to be 2.5D representations. The advantage of this is that perspectives are easier to draw and understand.



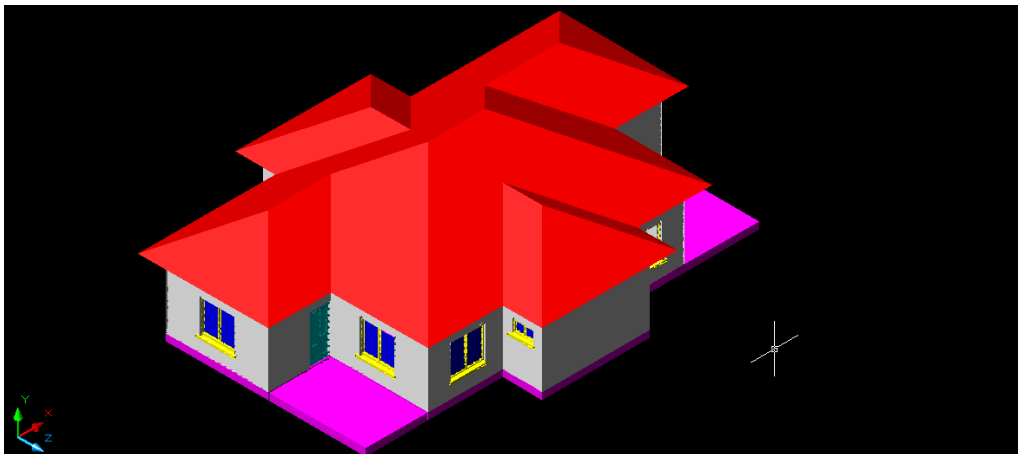
Example of 2.5D drawings i.e. a 3D CAD drawing (wire frame) viewed from the top as a plan view.



This is the front (approach view) of the above 3D wire frame drawing shown as an elevation.



This is an example of the SW isometric view of the above 3D wire frame drawing.



This is an example of the solid shaded 3D drawing model of the wire frame above.